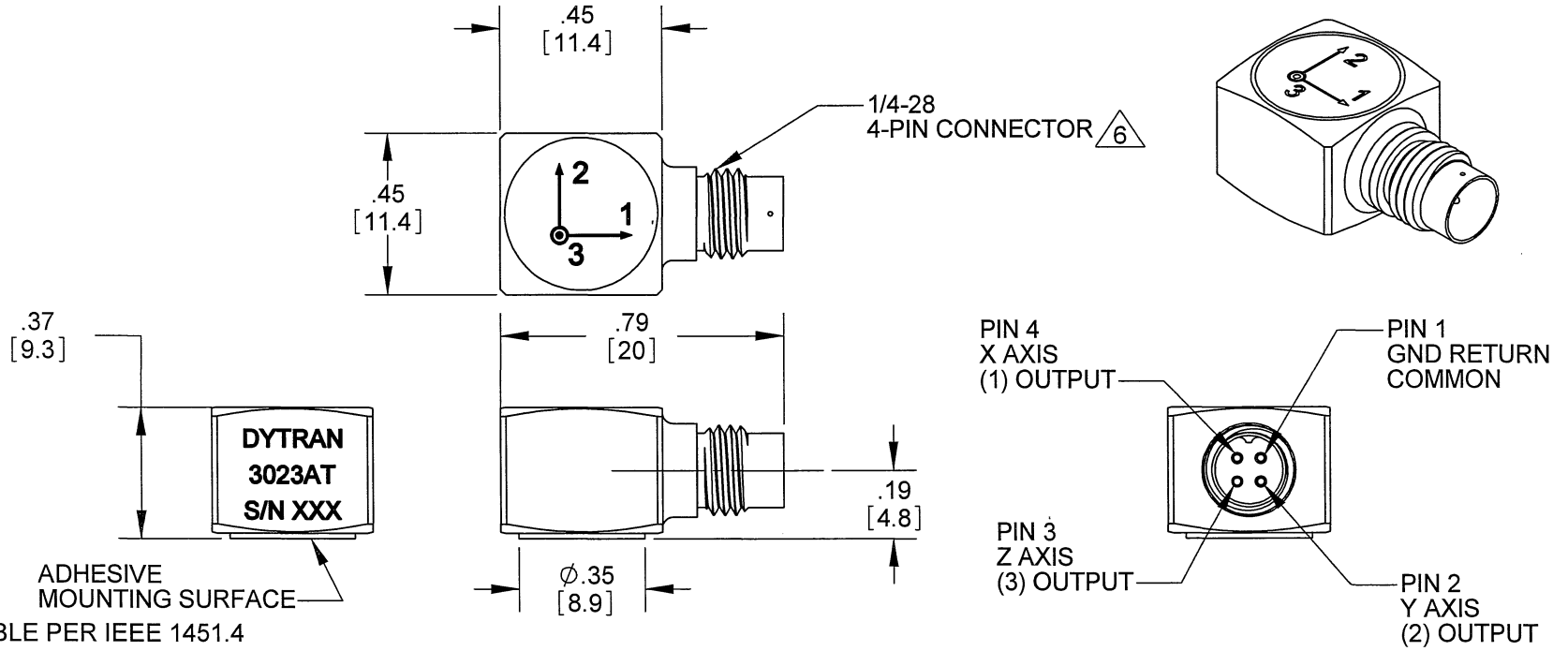


PROPRIETARY AND CONFIDENTIAL

THE INFORMATION CONTAINED IN THIS DRAWING IS THE SOLE PROPERTY OF DYTRAN INSTRUMENTS INC. ANY REPRODUCTION IN PART OR AS A WHOLE WITHOUT THE WRITTEN PERMISSION OF DYTRAN INSTRUMENTS INC. IS PROHIBITED

REVISIONS

REV.	ECN	DESCRIPTION	BY/DATE	CHK	APPR
A	6250	ADDED NOTE 5, 6, 7 AND REFORMATTED	RA, 11/23/09		



- 7. TEDS COMPATABLE PER IEEE 1451.4
- 6. MATES WITH DYTRAN 6811AXX OR 6824AXX CABLE (XX=LENGTH IN FEET)
- 5. OPERATIONAL TEMPERATURE:  $-60^{\circ}$  TO  $+250^{\circ}$ F
- 4. SENSITIVITY: 10mV/G NOM.
- 3. WEIGHT: 4.5 GRAMS NOM.
- 2. ARROWS INDICATE ACCELERATION DIRECTION FOR POSITIVE OUTPUT
- 1. MATERIAL: TITANIUM ALLOY

NOTES: UNLESS OTHERWISE SPECIFIED

USED ON	NEXT ASSY	UNLESS OTHERWISE SPECIFIED: INTERPRET DIM & TOL PER ASME Y14.5M - 1994. REMOVE BURRS. COUNTERSINK INTERNAL THDS 90° TO MAJOR DIA. CHAM EXT THDS 45° TO MINOR DIA. THD LENGTHS AND DEPTHS ARE FOR MIN FULL THDS. THDS PER MIL-S-7742. DIMENSIONS APPLY AFTER FINISHING. ALL MACHINED SURFACES. TOTAL RUNOUT WITHIN .005. BREAK SHARP EDGES .005 TO .010. MACHINED FILLET RADII .005 TO .015. WELDING SYMBOLS PER AWS A2.4. ABBREVIATIONS PER MIL-STD-12.
APPLICATION		
THIRD ANGLE PROJECTION USA		UNLESS OTHERWISE SPECIFIED: DIMENSIONS ARE IN INCHES. DIMENSIONS IN BRACKETS [ ] ARE IN MILLIMETERS TOLERANCES ARE: INCHES    METRIC    ANGLES .XX ± .03    .X ± 0.8    ± 1° .XXX ± .010    .XX ± 0.25
		MATERIAL FINISH DO NOT SCALE DRAWING

CONTRACT NO.

**MASTER ONLY IF IN RED**  
Chatsworth, CA

TITLE: **OUTLINE DRAWING, 3023AT TRIAXIAL ACCELEROMETER, TEDS**

SIZE	CAGE CODE	DWG. NO.	REV
<b>A</b>	<b>2W033</b>	<b>127-3023AT</b>	<b>A</b>

SCALE: 4:1      SOLIDWORKS      SHEET 1 OF 1



- MINATURE SIZE
- EXCELLENT LINEARITY
- ULTRA LOW WEIGHT
- TEDS FEATURE

**PHYSICAL**

Weight, Max.  
Connector  
Mounting Provision  
Material, Housing/Connector  
Sensing Element  
Element Style

ENGLISH		SI	
0.16	oz	4.5	grams
4-PIN		4-PIN	
Adhesive Mount		Adhesive Mount	
Titanium Alloy		Titanium Alloy	
Quartz		Quartz	
Shear		Shear	

**PERFORMANCE**

Sensitivity, -10 / +15 % [1]  
Range for ± 5 Volts Output  
Frequency Response ±5%  
-5 / +15%  
Resonant Frequency  
Broad Band Resolution  
Spectral Noise  
1.25Hz  
10Hz  
100Hz  
1000Hz  
10000Hz

10	mV/g	1	mV/m/s <sup>2</sup>
±500	g	±4903	m/s <sup>2</sup>
1.5 to 5000	Hz	1.5 to 5000	Hz
1.5 to 10000	Hz	1.5 to 10000	Hz
> 40	kHz	> 40	kHz
0.007	Grms	0.069	m/s <sup>2</sup> rms
0.003	µGrms/v(Hz)	0.029	µm/s <sup>2</sup> rms/v(Hz)
0.001	µGrms/v(Hz)	0.0098	µm/s <sup>2</sup> rms/v(Hz)
0.0002	µGrms/v(Hz)	0.00196	µm/s <sup>2</sup> rms/v(Hz)
0.00005	µGrms/v(Hz)	0.00049	µm/s <sup>2</sup> rms/v(Hz)
0.00004	µGrms/v(Hz)	0.00039	µm/s <sup>2</sup> rms/v(Hz)

Linearity [2]  
Maximum Transverse sensitivity  
Strain Sensitivity @ 250µε

1	% F.S.	1	% F.S.
5	%	5	%
0.039	g/µε	0.38	m/s <sup>2</sup> /µε

**ENVIRONMENTAL**

Maximum Vibration  
Maximum Shock  
Temperature Range  
TEDS Operating Temperature  
Seal

±600	Gpeak	±5884	m/s <sup>2</sup> peak
5000	Gpeak	49033	m/s <sup>2</sup> peak
-60 to +250	°F	-51 to +121	°C
-60 to +185	°F	-51 to +85	°C
Hermetic		Hermetic	

**ELECTRICAL**

Supply Current Range [3]  
Compliance Voltage Range  
Output Impedance, Typ  
Bias Voltage  
Discharge Time Constant  
Electrical Isolation  
TEDS Feature

2 to 20	mA	2 to 20	mA
18 to 30	Volts	18 to 30	Volts
100	Ω	100	Ω
7 to 11	VDC	7 to 11	VDC
0.3 to 1.5	Sec	0.3 to 1.5	Sec
Case Grounded	GΩ, min	Case Grounded	GΩ, min
IEEE 1451.4		IEEE 1451.4	

**This family also includes:**

Model	Sensitivity (mV/g)	Frequency Response (Hz)	Mounting	Operating Temp (°F)
3023A1T	10 (-10 to +15%)	1.5 to 10000 (-5 to +15%)	5-40 Tapped Hole	-60 to +250

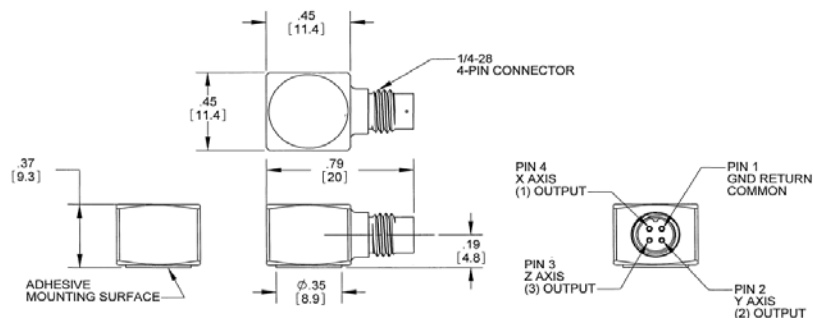
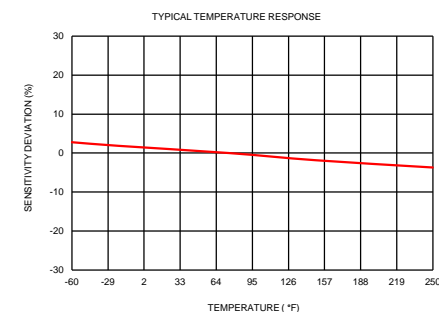
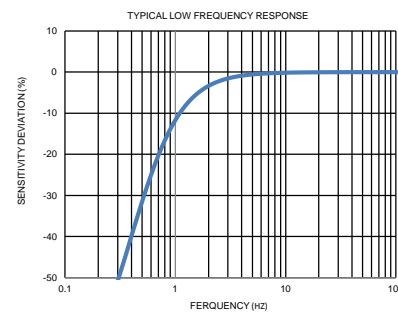
Refer to the performance specifications of the products in this family for detailed description

**Supplied Accessories:**

- 1) Accredited calibration certificate (ISO 17025)

**Notes:**

- [1] Measured at 100Hz, 1 Grms per ISA RP 37.2.
- [2] Measure using zero-based straight line method, % of F.S. or any lesser range.
- [3] Do not apply power to this system without current limiting, 20 mA MAX. To do so will destroy the IC charge amplifier.
- [4] In the interest of constant product improvement, we reserve the right to change specifications without notice.



Units on the line drawing are in inches, units in brackets are in millimeters. Refer to 127-3023AT for more information.

